

DATA SHEET

Art.nr.:
Q9MT1

ONEPOLE PRO Roof Cover Duo 350

Q9MT1

Net Weight

1040g

Gross Weight

1230g

Net Dimension

350x346x22mm

Gross Dimensions

357x356x35mm

Material

Powdercoated searesistant aluminium

Standard Colour

RAL9005

Surface Treatment

Powdercoated ISO 12944, Category C4

Protection Class

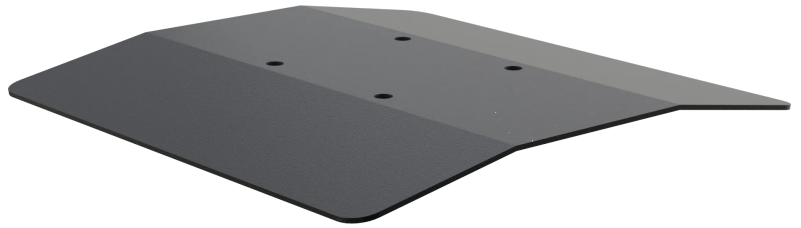
Class I, must be connected to PE

Degree of Protection

IK10

Accessories

M5x20 recessed screws 4pcs



ONEPOLE

COMPLETE
EV INFRASTRUCTURE

Data sheet | 2023 | www.onepole.no

PRODUCED AND DESIGNED IN NORWAY 