

# DATA SHEET

Art.nr.:  
Q9MT3

## ONEPOLE PRO Roof Cover Quad 600

Q9MT3

**Net Weight**

3220g

**Gross Weight**

3580g

**Net Dimension**

607,5x607,5x28,7mm

**Gross Dimensions**

620x610x30mm

**Material**

Powdercoated searesistant aluminium

**Standard Colour**

RAL9005

**Surface Treatment**

Powdercoated ISO 12944, Category C4

**Protection Class**

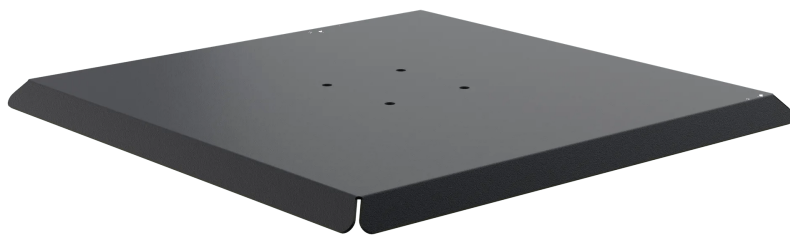
Class I, must be connected to PE

**Degree of Protection**

IK10

**Accessories**

M5x20 recessed screws 4pcs



COMPLETE  
EV INFRASTRUCTURE

Data sheet | 2023 | [www.onepole.no](http://www.onepole.no)

PRODUCED AND DESIGNED IN NORWAY 